

PROJECT - TATO-II H.E. PROJECT
LOCATION - LEFT BANK INTAKE
BEARING OF HOLE - VERTICAL
COLLAR ELEVATION - 915.303 M
STARTED - 26.08.2010

Geological Log of Drill Hole

Drill Hole NO.- DH-6
SHEET - 1/3

CO-ORDINATES - N 24572.6, E 20363.82
FEATURE - DAM
TOTAL DEPTH - 58.30 M
TYPE(S) OF CORE BARREL - NXM DOUBLE TUBE
DRILLING AGENCY - M/S MAPL

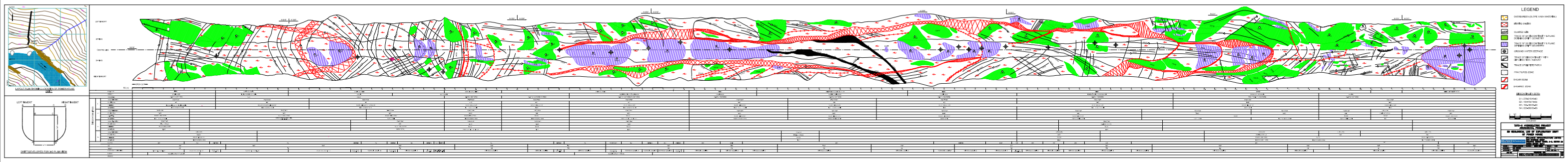
ELEVATION (m)	LITHOLOGY	DESCRIPTION	DEPTH (m)	LOG	SIZE OF CORE PCS				STRUCTURAL CONDITIONS	PERCENT CORE RECOVERY				FRACT FREQ/m	TYPE OF BIT	SIZE OF HOLE	CASING	DEPTH OF WT	NIL PARTIAL COMPLETE	DRILL PREPARE WATER LOSS SECTION	LUGEON	PENETRATION RATE Cm/min	SPECIAL OBSERVATIONS AND INTERPRETATIONS		
					< 10 mm	10 TO 25 mm	25 TO 75 mm	> 75 TO 150 mm		0 TO 25%	26 TO 75%	76 TO 100%	100%												
915.303	OVERBURDEN COMPRISING OF SLOPE WASH MATERIAL		0.0	△△△	△△△	△△△	△△△	△△△	△△△	11.7%		PX	PX	PX								4.0	1. THIS HOLE WAS DRILLED TO DECIPHER THE BEDROCK CONDITION & OVERBURDEN THICKNESS ON LEFT BANK INTAKE.		
			3.0	△△△	△△△	△△△	△△△	△△△	△△△	△△△															
			3.5	△△△	△△△	△△△	△△△	△△△	△△△	△△△	46%														
			4.0	△△△	△△△	△△△	△△△	△△△	△△△	△△△	60%														
			4.5	△△△	△△△	△△△	△△△	△△△	△△△	△△△	30%														
910.303			5.0	△△△	△△△	△△△	△△△	△△△	△△△	△△△	100%														
	OVERBURDEN COMPRISING OF SLOPE WASH MATERIAL		6.0	△△△	△△△	△△△	△△△	△△△	△△△	40%														4. BEDROCK IS OVERALL SLIGHTLY TO MODERATELY JOINTED/FRACTURED QUARTZITES.	
			6.5	△△△	△△△	△△△	△△△	△△△	△△△	△△△	80%														
			7.0	△△△	△△△	△△△	△△△	△△△	△△△	△△△	74%														
			7.5	△△△	△△△	△△△	△△△	△△△	△△△	△△△	100%														
			8.0	△△△	△△△	△△△	△△△	△△△	△△△	△△△	94%														
			9.0	△△△	△△△	△△△	△△△	△△△	△△△	△△△	30%														5. WATER PRESSURE TEST IN BEDROCK INFERS VALUE RANGING FROM 1.19 TO 3.46 LUGEON.
904.803	SLOPE WASH MATERIALS		9.5	△△△	△△△	△△△	△△△	△△△	76%																
			10.5	△△△	△△△	△△△	△△△	△△△	△△△	85%															
			11.5	△△△	△△△	△△△	△△△	△△△	△△△	△△△	21%														
			12.0	△△△	△△△	△△△	△△△	△△△	△△△	△△△	64%														
			13.0	△△△	△△△	△△△	△△△	△△△	△△△	△△△	40%														
901.303			14.0	△△△	△△△	△△△	△△△	△△△	△△△	△△△	74%														
	OVERBURDEN COMPRISING OF SLOPE WASH MATERIALS		15.0	△△△	△△△	△△△	△△△	△△△	58%																
			16.0	△△△	△△△	△△△	△△△	△△△	△△△	45%															
			17.0	△△△	△△△	△△△	△△△	△△△	△△△	52%															
			18.0	△△△	△△△	△△△	△△△	△△△	△△△	60%															
			19.0	△△△	△△△	△△△	△△△	△△△	△△△	50%															
895.303			19.5	△△△	△△△	△△△	△△△	△△△	△△△	60%															
			20.0	△△△	△△△	△△△	△△△	△△△	64%																

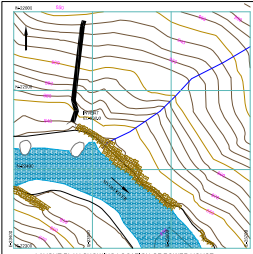
PROJECT - TATO-II H.E. PROJECT
LOCATION - LEFT BANK INTAKE

CO-ORDINATES - N 24572.6, E 20363.82
ANGLE WITH HORIZONTAL - 90°

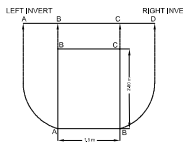
GROUND ELEVATION - 915.153 M
TOTAL DEPTH - 58.30 M

ELEVATION (m)	LITHOLOGY		DEPTH (m)	LOG	SIZE OF CORE PCS	STRUCTURAL CONDITIONS	DRILL PARAMETERS										PENETRATION RATE Cm/min	SPECIAL OBSERVATIONS AND INTERPRETATIONS
	DESCRIPTION						PERCENT CORE RECOVERY	R.O.D.%	FRACT FREQ/m	TYPE OF BIT	SIZE OF HOLE	CASING	DEPTH OF W.T	DRILL WATER LOSS	PARTIAL COMPLETION	TEST SECTION	LUGEON	
894.303	SLOPE WASH MATERIALS		20				50%	60									1.11	
			21.0				50%	60									0.91	
			21.5				50%	60									0.83	
			22.0				32%	60									0.77	
	OVERBURDEN COMPRISING OF SLOPE WASH MATERIAL		23.0				20%	60									0.98	
			23.5				44%	60									1.05	
			24.5				30%	60									0.77	
			25.0				40%	60									0.77	
889.803	RIVER BORNE MATERIAL CONSISTING OF BOULDER & COBBLE OF GNEISSIC ROCKS		25.5				30%	60									0.93	
	OVERBURDEN COMPRISING OF RIVER BORNE MATERIAL CONSISTING OF BOULDER OF GNEISSIC ROCKS		26.5				20%	60									1.11	
			27.0				30%	60									0.77	
			27.5				48%	60									0.71	
			28.0				70%	60									0.68	
886.803	RIVER BORNE MATERIAL CONSISTING OF BOULDER, COBBLE AND PEBBLE OF GNEISSIC ROCKS		28.5				68%	60									0.77	
886.303	RIVER BORNE MATERIAL CONSISTING OF BOULDER, COBBLE AND PEBBLE OF GNEISSIC ROCKS		29.0				66%	60									0.77	
885.303	RIVER BORNE MATERIAL CONSISTING OF BOULDER OF GNEISSIC ROCKS		30.0				58%	60									0.81	
884.303	RIVER BORNE MATERIAL CONSISTING OF BOULDERS, COBBLES AND PEBBLES OF GNEISSIC ROCKS		30.5				50%	60									0.77	
			31.0				70%	60									0.77	
								60									0.77	
								60									0.77	
	MODERATELY JOINTED /FRAC-TURED HARD AND COMPETENT QUARTZITIC GNEISS		32.0				75%	60									1.04	
								60									1.04	
								60									1.04	
								60									1.04	
881.803	SLIGHTLY TO MODERATELY JOINTED/FRACTURED HARD AND COMPETENT QUARTZITIC GNEISS		33.5				98.7%	60									1.13	
880.803	MODERATELY JOINTED/FRACTURED HARD AND COMPETENT QUARTZITIC GNEISS		34.5				95%	60									1.05	
								60									1.05	
								60									1.05	
								60									1.05	
880.303	MODERATELY JOINTED/FRACTURED HARD AND COMPETENT QUARTZITIC GNEISS		35.0				100%	60									0.67	
	SLIGHTLY JOINTED/FRACTURED HARD AND COMPETENT QUARTZITES.		36.3				100%	60									0.91	
								60									0.91	
								60									0.91	
								60									0.91	
878.303	SLIGHTLY JOINTED/FRACTURED HARD AND COMPETENT QUARTZITES.		37.0				100%	60									0.73	
875.303	SLIGHTLY JOINTED/FRACTURED HARD AND COMPETENT GARNETIFEROUS QUARTZITES.		37.8				95.8%	60									0.44	(FROM 37.93-37.98, BIOTITE GNEISS BAND IS OBSERVED)
								60									0.44	
								60									0.44	
								60									0.44	
			39.0				100%	60									0.85	
								60									0.85	
								60									0.85	
								60									0.85	
875.303			40.0				99.5%	60									0.76	

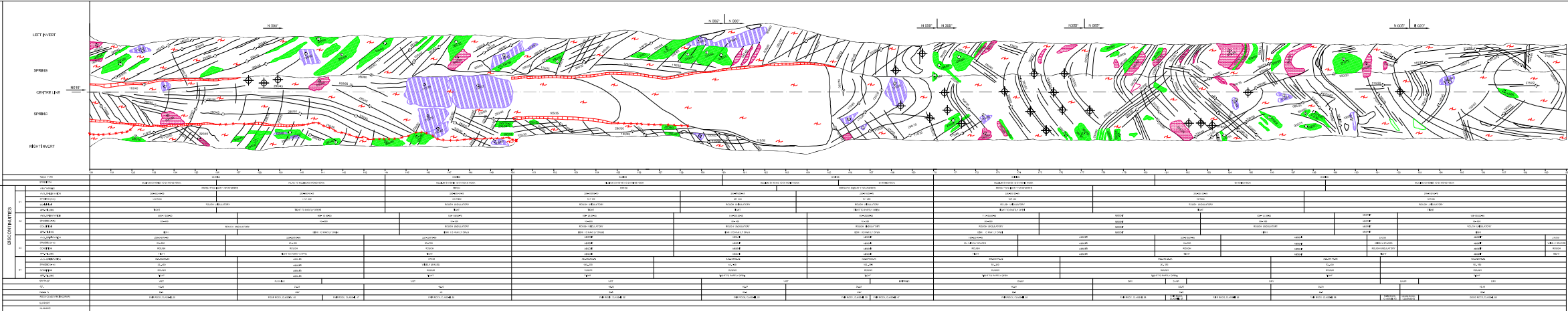




INSET MAP SHOWING LOCATION OF POWERHOUSE



DRIFT DEVELOPED FOR 3D PLAN VIEW



LEGEND

- OVERBURDEN (SLOPE WASH MATERIAL)
- BIOTITE GNEISS
- TRACE OF D1 DISCONTINUITY & PLANE DEFINING DRIFT GEOMETRY
- TRACE OF D2 DISCONTINUITY & PLANE DEFINING DRIFT GEOMETRY
- TRACE OF D3 DISCONTINUITY & PLANE DEFINING DRIFT GEOMETRY
- TRACE OF D4 DISCONTINUITY & PLANE DEFINING DRIFT GEOMETRY
- GROUND WATER BEELFADE
- TRACE OF DISCONTINUITY WITH DR DIRECTION / AMOUNT
- OPEN JOINTS WITH SEPARATION < 5 CM
- SHEAR BEAM

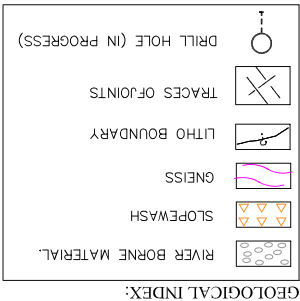
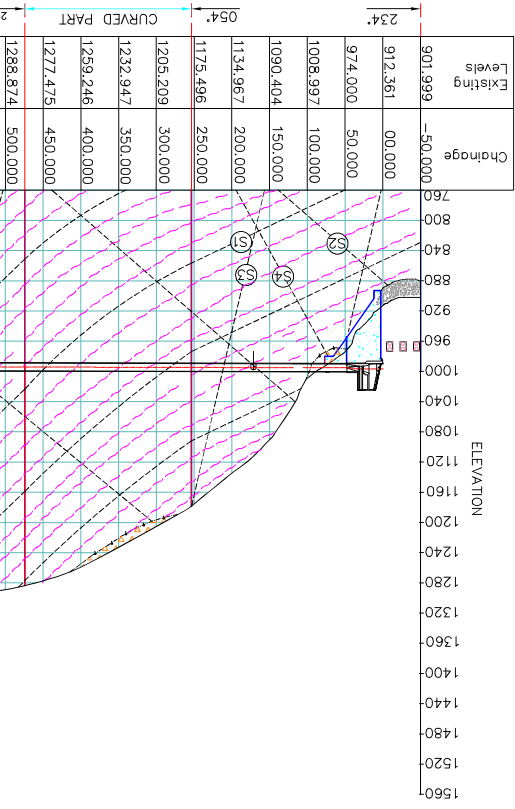
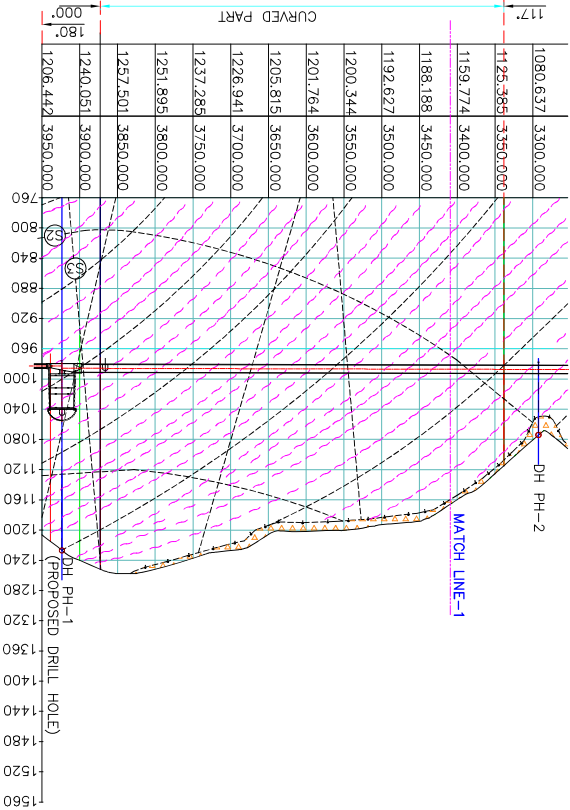
DISCONTINUITY SETS

- S1 : 270-315-45-50
- S2 : 105-195-15-45
- S3 : 150-45-50-45
- S4 : 105-45-50-45

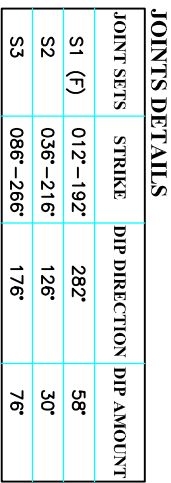
TATO-8 HYDROELECTRIC PROJECT
ADDITIONAL FRAMES:
3D GEOLOGICAL LOG OF EXPLORATORY DRIFT
OF POWER HOUSE

SCALE 1:5000
DATE 10/01/2023
BY [Signature]
CHECKED [Signature]
APPROVED [Signature]

Client:		Project:		Title:		Drawing No.		Serial		Rev.		Formula A1 (mm)	
TATO HYDRO POWER		TATO-II		HYDROELECTRIC PROJECT		Arunachal Pradesh, India.		167103		TT-02		4JDD	
SNC-Lavalin Engineering India		18.08.2010		V. P. Sharda		Antu.P.K		167103-TT-02-4JDD-1013-00		1		5000	
Project Director		Date		Verified		Antu.P.K		167103-TT-02-4JDD-1013-00		1		5000	
Designed		Verified		Antu.P.K		167103-TT-02-4JDD-1013-00		1		5000		1	
Drawn		Verified		Antu.P.K		167103-TT-02-4JDD-1013-00		1		5000		1	
Scale		AutoCAD No.		THIS DRAWING IS MEANT FOR DPR		NOT TO BE USED FOR CONSTRUCTION.		Project No.		167103		TT-02	
Revisions		Project No.		167103		TT-02		4JDD		1013		00	



JOINT SETS	STRIKE	DIP DIRECTION	DIP AMOUNT
S1	024°-204°	294°	44°
S2	173°-353°	083°	44°
S3	077°-257°	167°	87°
S4	081°-261°	351°	77°



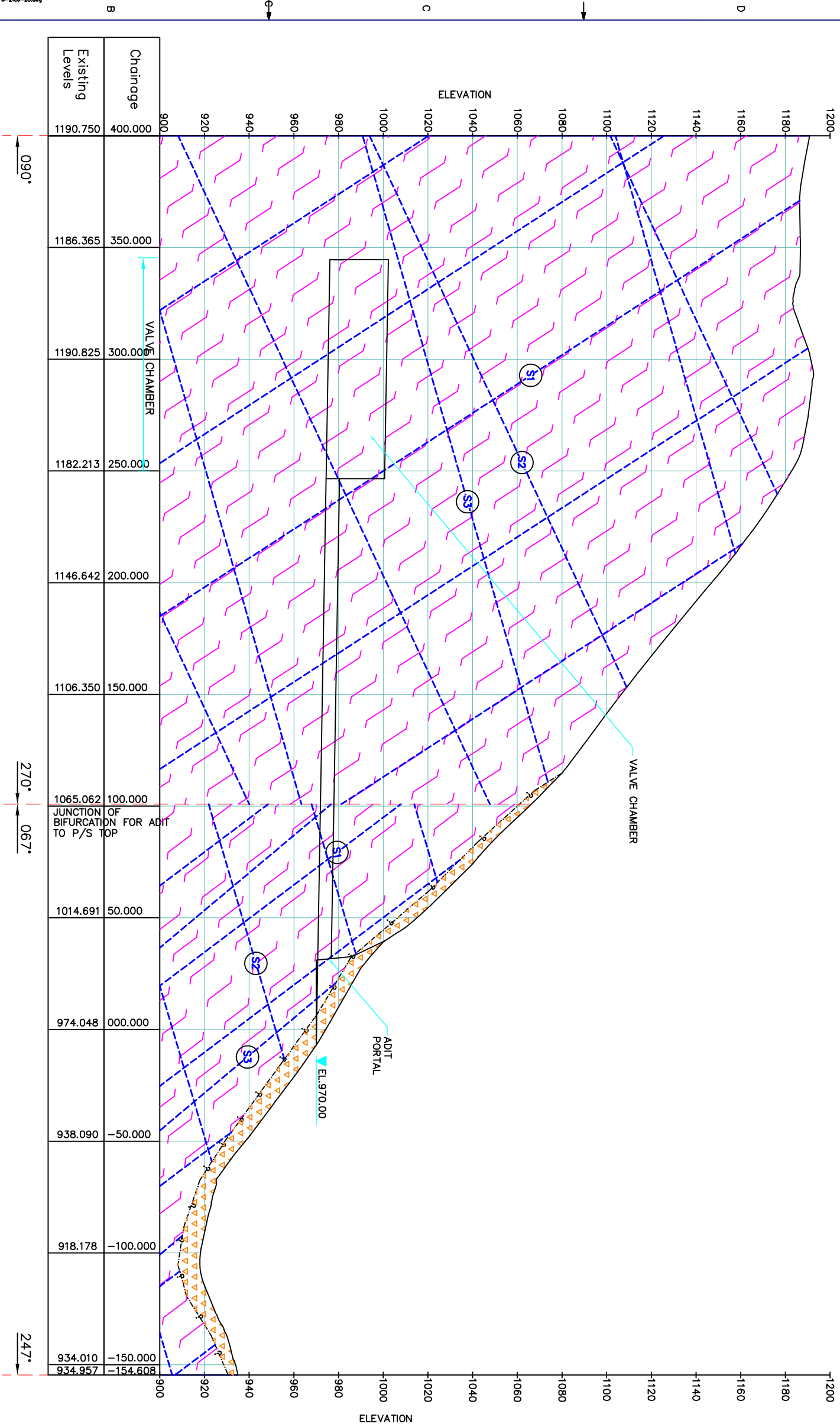
JOINT SETS	STRIKE	DIP DIRECTION	DIP AMOUNT
S1 (F)	012–192°	282°	58°
S2	036–216°	126°	30°
S3	086–266°	176°	76°

	SLOPEWASH
	GNEISS
	LITHO BOUNDARY
	TRACES OF JOINTS
	DRILL HOLE (IN PROGRESS)

1. ALL DIMENSIONS AND LEVELS ARE IN METRES UNLESS OTHERWISE SPECIFIED.
2. FOR LOCATION OF SECTION LINE REFER PLATE NO.G-17



Client:	TATO HYDRO POWER PRIVATE LIMITED				
Project:	TATO-II HYDROELECTRIC PROJECT Arunachal Pradesh, India.				
Title:	GEOLOGICAL SECTION ALONG ADIT TO SURGE SHAFT TOP (SECTION 1-1)				
Project No.	167103	TT-02	4DD	1018	01
	Drawing Code.			Serial.	Rev.



JOINTS DETAILS			
JOINT SETS	STRIKE	DIP DIRECTION	DIP AMOUNT
S1 (F)	012°-192°	282°	58°
S2	036°-216°	126°	30°
S3	086°-266°	176°	76°

	SLOPEWASH
	GNEISS
	LITHO BOUNDARY
	TRACES OF JOINTS

- NOTES:
1. ALL DIMENSIONS AND LEVELS ARE IN METRES UNLESS OTHERWISE SPECIFIED.
 2. FOR LOCATION OF SECTION LINE REFER PLATE NO.G-17



																																																																																																																																																																																																																																																																																																																																																																																																																																																																																																																																																																																																																																																																																																																																																																																																																																																																																																																																																																																																																																																																																																																																																																																																																																																																																																																																																																																																																																																																																																																																																																																																																																																																																																																																																																																																																																																																																																																																																																																																																																																																																																																																																																																																																																																																																																																																																																																																																																				</			
--	--	--	--	--	--	--	--	--	--	--	--	--	--	--	--	--	--	--	--	--	--	--	--	--	--	--	--	--	--	--	--	--	--	--	--	--	--	--	--	--	--	--	--	--	--	--	--	--	--	--	--	--	--	--	--	--	--	--	--	--	--	--	--	--	--	--	--	--	--	--	--	--	--	--	--	--	--	--	--	--	--	--	--	--	--	--	--	--	--	--	--	--	--	--	--	--	--	--	--	--	--	--	--	--	--	--	--	--	--	--	--	--	--	--	--	--	--	--	--	--	--	--	--	--	--	--	--	--	--	--	--	--	--	--	--	--	--	--	--	--	--	--	--	--	--	--	--	--	--	--	--	--	--	--	--	--	--	--	--	--	--	--	--	--	--	--	--	--	--	--	--	--	--	--	--	--	--	--	--	--	--	--	--	--	--	--	--	--	--	--	--	--	--	--	--	--	--	--	--	--	--	--	--	--	--	--	--	--	--	--	--	--	--	--	--	--	--	--	--	--	--	--	--	--	--	--	--	--	--	--	--	--	--	--	--	--	--	--	--	--	--	--	--	--	--	--	--	--	--	--	--	--	--	--	--	--	--	--	--	--	--	--	--	--	--	--	--	--	--	--	--	--	--	--	--	--	--	--	--	--	--	--	--	--	--	--	--	--	--	--	--	--	--	--	--	--	--	--	--	--	--	--	--	--	--	--	--	--	--	--	--	--	--	--	--	--	--	--	--	--	--	--	--	--	--	--	--	--	--	--	--	--	--	--	--	--	--	--	--	--	--	--	--	--	--	--	--	--	--	--	--	--	--	--	--	--	--	--	--	--	--	--	--	--	--	--	--	--	--	--	--	--	--	--	--	--	--	--	--	--	--	--	--	--	--	--	--	--	--	--	--	--	--	--	--	--	--	--	--	--	--	--	--	--	--	--	--	--	--	--	--	--	--	--	--	--	--	--	--	--	--	--	--	--	--	--	--	--	--	--	--	--	--	--	--	--	--	--	--	--	--	--	--	--	--	--	--	--	--	--	--	--	--	--	--	--	--	--	--	--	--	--	--	--	--	--	--	--	--	--	--	--	--	--	--	--	--	--	--	--	--	--	--	--	--	--	--	--	--	--	--	--	--	--	--	--	--	--	--	--	--	--	--	--	--	--	--	--	--	--	--	--	--	--	--	--	--	--	--	--	--	--	--	--	--	--	--	--	--	--	--	--	--	--	--	--	--	--	--	--	--	--	--	--	--	--	--	--	--	--	--	--	--	--	--	--	--	--	--	--	--	--	--	--	--	--	--	--	--	--	--	--	--	--	--	--	--	--	--	--	--	--	--	--	--	--	--	--	--	--	--	--	--	--	--	--	--	--	--	--	--	--	--	--	--	--	--	--	--	--	--	--	--	--	--	--	--	--	--	--	--	--	--	--	--	--	--	--	--	--	--	--	--	--	--	--	--	--	--	--	--	--	--	--	--	--	--	--	--	--	--	--	--	--	--	--	--	--	--	--	--	--	--	--	--	--	--	--	--	--	--	--	--	--	--	--	--	--	--	--	--	--	--	--	--	--	--	--	--	--	--	--	--	--	--	--	--	--	--	--	--	--	--	--	--	--	--	--	--	--	--	--	--	--	--	--	--	--	--	--	--	--	--	--	--	--	--	--	--	--	--	--	--	--	--	--	--	--	--	--	--	--	--	--	--	--	--	--	--	--	--	--	--	--	--	--	--	--	--	--	--	--	--	--	--	--	--	--	--	--	--	--	--	--	--	--	--	--	--	--	--	--	--	--	--	--	--	--	--	--	--	--	--	--	--	--	--	--	--	--	--	--	--	--	--	--	--	--	--	--	--	--	--	--	--	--	--	--	--	--	--	--	--	--	--	--	--	--	--	--	--	--	--	--	--	--	--	--	--	--	--	--	--	--	--	--	--	--	--	--	--	--	--	--	--	--	--	--	--	--	--	--	--	--	--	--	--	--	--	--	--	--	--	--	--	--	--	--	--	--	--	--	--	--	--	--	--	--	--	--	--	--	--	--	--	--	--	--	--	--	--	--	--	--	--	--	--	--	--	--	--	--	--	--	--	--	--	--	--	--	--	--	--	--	--	--	--	--	--	--	--	--	--	--	--	--	--	--	--	--	--	--	--	--	--	--	--	--	--	--	--	--	--	--	--	--	--	--	--	--	--	--	--	--	--	--	--	--	--	--	--	--	--	--	--	--	--	--	--	--	--	--	--	--	--	--	--	--	--	--	--	--	--	--	--	--	--	--	--	--	--	--	--	--	--	--	--	--	--	--	--	--	--	--	--	--	--	--	--	--	--	--	--	--	--	--	--	--	--	--	--	--	--	--	--	--	--	--	--	--	--	--	--	--	--	--	--	--	--	--	--	--	--	--	--	--	--	--	--	--	--	--	--	--	--	--	--	--	--	--	--	--	--	--	--	--	--	--	--	--	--	--	--	--	--	--	--	--	--	--	--	--	--	--	--	--	--	--	--	--	--	--	--	--	--	--	--	--	--	--	--	--	--	--	--	--	--	--	--	--	--	--	--	--	--	--	--	--	--	--	--	--	--	--	--	--	--	--	--	--	--	--	--	--	--	--	--	--	--	--	--	--	--	--	--	--	--	--	--	--	--	--	--	--	--	--	--	--	--	--	--	--	--	--	--	--	--	--	--	--	--	--	--	--	--	--	--	--	--	--	--	--	--	--	--	--	--	--	--	--	--	--	--	--	--	--	--	--	--	--	--	--	--	--	--	--	--	--	--	--	--	--	--	--	--	--	--	--	--	--	--	--	--	--	--	--	--	--	--	--	--	--	--	--	--	--	--	--	--	--	--	--	--	--	--	--	--	--	--	--	--	--	--	--	--	--	--	--	--	--	--	--	--	--	--	--	--	--	--	--	--	--	--	--	--	--	--	--	--	--	--	--	--	--	--	--	--	--	--	--	--	--	--	--	--	--	--	--	--	--	--	--	--	--	--	--	--	--	--	--	--	--	--	--	--	--	--	--	--	--	--	--	--	--	--	--	--	--	--	--	--	--	--	--	--	--	--	--	--	--	--	--	--	--	--	--	--	--	--	--	--	--	--	--	--	--	--	--	--	--	--	--	--	--	--	--	--	--	--	--	--	--	--	--	--	--	--	--	--	--	--	--	--	--	--	--	--	--	--	--	--	--	--	--	--	--	--	--	--	--	--	--	--	--	--	--	--	--	--	--	--	--	--	--	--	--	--	--	--	--	--	--	--	--	--	--	--	--	--	--	--	--	--	--	--	--	--	--	--	--	--	--	--	--	--	--	--	--	--	--	--	--	--	--	--	--	--	--	--	--	--	--	--	--	--	--	--	--	--	--	--	--	--	--	--	--	--	--	--	--	--	--	--	--	--	--	--	--	--	--	--	--	--	--	--	--	--	--	--	--	--	--	--	--	--	--	--	--	--	--	--	--	--	--	--	--	--	--	--	--	--	--	--	--	--	--	--	--	--	--	--	--	--	--	--	--	--	--	--	--	--	--	--	--	--	--	--	--	--	--	--	--	--	--	--	--	--	--	--	--	--	--	--	--	--	--	--	--	--	--	--	--	--	--	--	--	--	--	--	--	--	--	--	--	--	--	--	--	--	--	--	--	--	--	--	--	--	--	--	--	--	--	--	--	--	--	--	--	--	--	--	--	--	--	--	--	--	--	--	--	--	--	--	--	--	--	--	--	--	--	--	--	--	--	--	--	--	--	--	--	--	--	--	--	--	--	--	--	--	--	--	--	--	--	--	--	--	--	--	--	--	--	--	--	--	--	--	--	--	--	--	--	--	--	--	--	--	--	--	--	--	--	--	--	--	--	--	--	--	--	--	--	--	--	--	--	--	--	--	--	--	--	--	--	--	--	--	--	--	--	--	--	--	--	--	--	--	--	--	--	--	--	--	--	--	--	--	--	--	--	--	--	--	--	--	--	--	--	--	--	--	--	--	--	--	--	--	--	--	--	--	--	--	--	--	--	--	--	--	--	--	--	--	--	--	--	--	--	--	--	--	--	--	--	--	--	--	--	--	--	--	--	--	--	--	--	--	--	--	--	--	--	--	--	--	--	--	--	--	--	--	--	--	--	--	--	--	--	--	--	--	--	--	--	--	--	--	--	--	--	--	--	--	--	--	--	--	--	--	--	--	--	--	--	--	--	--	--	--	--	--	--	--	--	--	--	--	--	--	--	--	--	--	--	--	--	--	--	--	--	--	--	--	--	--	--	--	--	--	--	--	--	--	--	--	--	--	--	--	--	--	--	--	--	--	--	--	--	--	--	--	--	--	--	--	--	--	--	--	--	--	--	--	--	--	--	--	--	--	--	--	--	--	--	--	--	--	--	--	--	--	--	--	--	--	--	--	--	--	--	--	--	--	--	--	--	--	--	--	--	--	--	--	--	--	--	--	--	--	--	--	--	--	--	--	--	--	--	--	--	--	--	--	--	--	--	--	--	--	--	--	--	--	--	--	--	--	--	--	--	--	--	--	--	--	--	--	--	--	--	--	--	--	--	--	--	--	--	--	--	--	--	--	--	--	--	--	--	--	--	--	--	--	--	--	--	--	--	--	--	--	--	--	--	--	--	--	--	--	--	--	--	--	--	--	--	--	--	--	--	--	--	--	--	--	--	--	--	--	--	--	--	--	--	--	--	--	--	--	--	--	--	--	--	--	--	--	--	--	--	--	--	--	--	--	--	--	--	--	--	--	--	--	--	--	--	--	--	--	--	--	--	--	--	--	--	--	--	--	--	--	--	--	--	--	--	--	--	--	--	--	--	--	--	--	--	--	--	--	--	--	--	--	--	--	--	--	--	--	--	--	--	--	--	--	--	--	--	--	--	--	--	--	--	--	--	--	--	--	--	--	--	--	--	--	--	--	--	--	--	--	--	--	--	--	--	--	--	--	--	--	--	--	--	--	--	--	--	--	--	--	--	--	--	--	--	--	--	--	--	--	--	--	--	--	--	--	--	--	--	--	--	--	--	--	--	--	--	--	--	--	--	--	--	--	--	--	--	--	--	--	--	--	--	--	--	--	--	--	--	--	--	--	--	--	--	--	--	--	--	--	--	--	--	--	--	--	--	--	--	--	--	--	--	--	--	--	--	--	--	--	--	--	--	--	--	--	--	--	--	--	--	--	--	--	--	--	--	--	--	--	--	--	--	--	--	--	--	--	--	--	--	--	--	--	--	--	--	--	--	--	--	--	--	--	--	--	--	--	--	--	--	--	--	--	--	--	--	--	--	--	--	--	--	--	--	--	--	--	----	--	--	--

4

3

0

1

2

3

4

6

7

8

9

10

CENTIMETRES

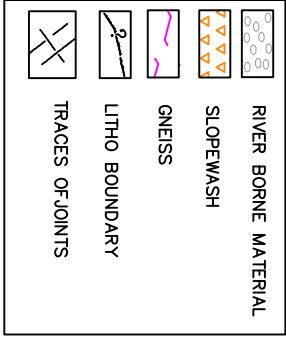
2

1

Plate G- 20

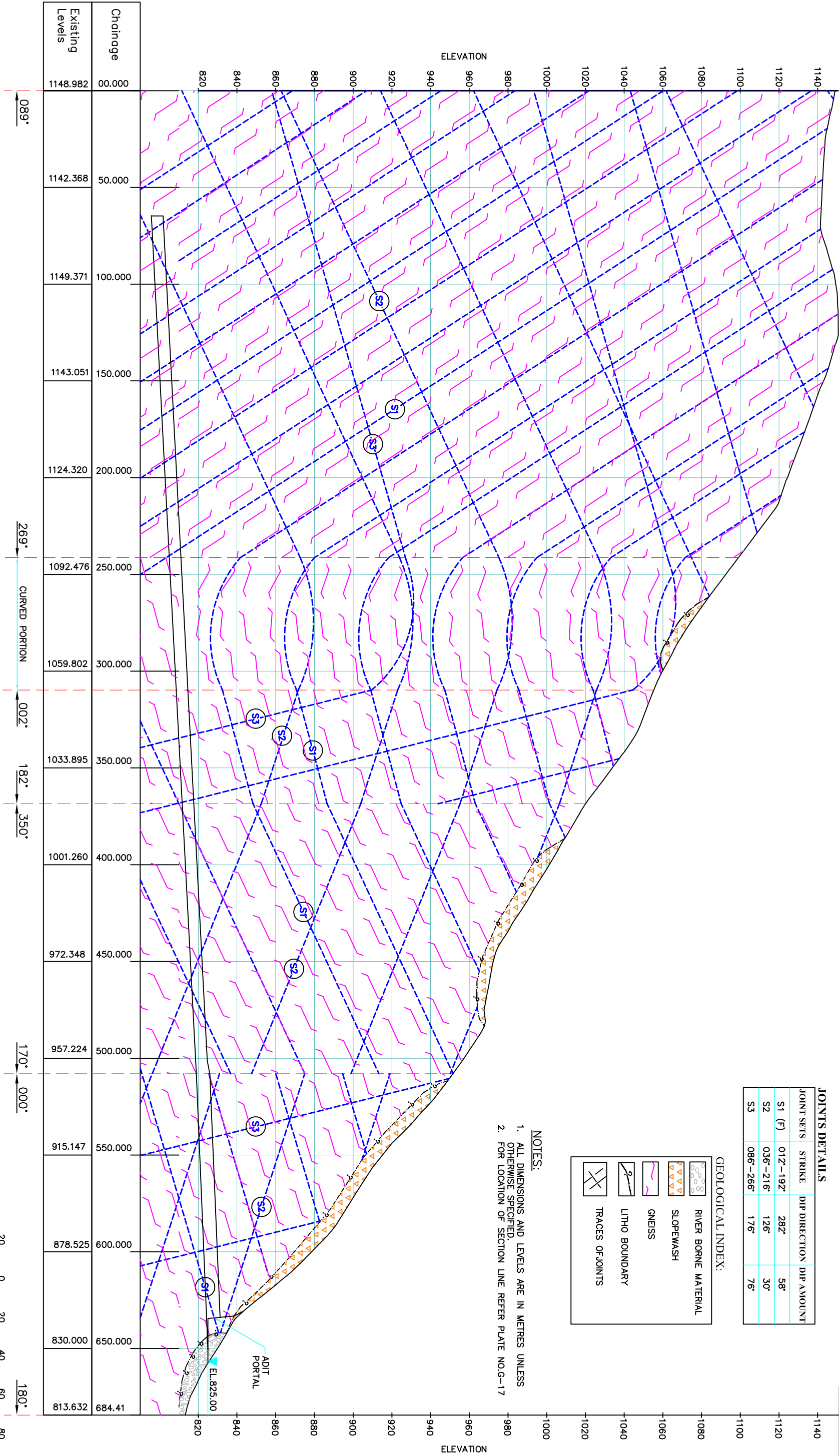
JOINTS DETAILS			
JOINT SETS	STRIKE	DIP DIRECTION	DIP AMOUNT
S1 (F)	012° - 192°	282°	58°
S2	036° - 216°	126°	30°
S3	086° - 266°	176°	76°

GEOLOGICAL INDEX:




NOTES:

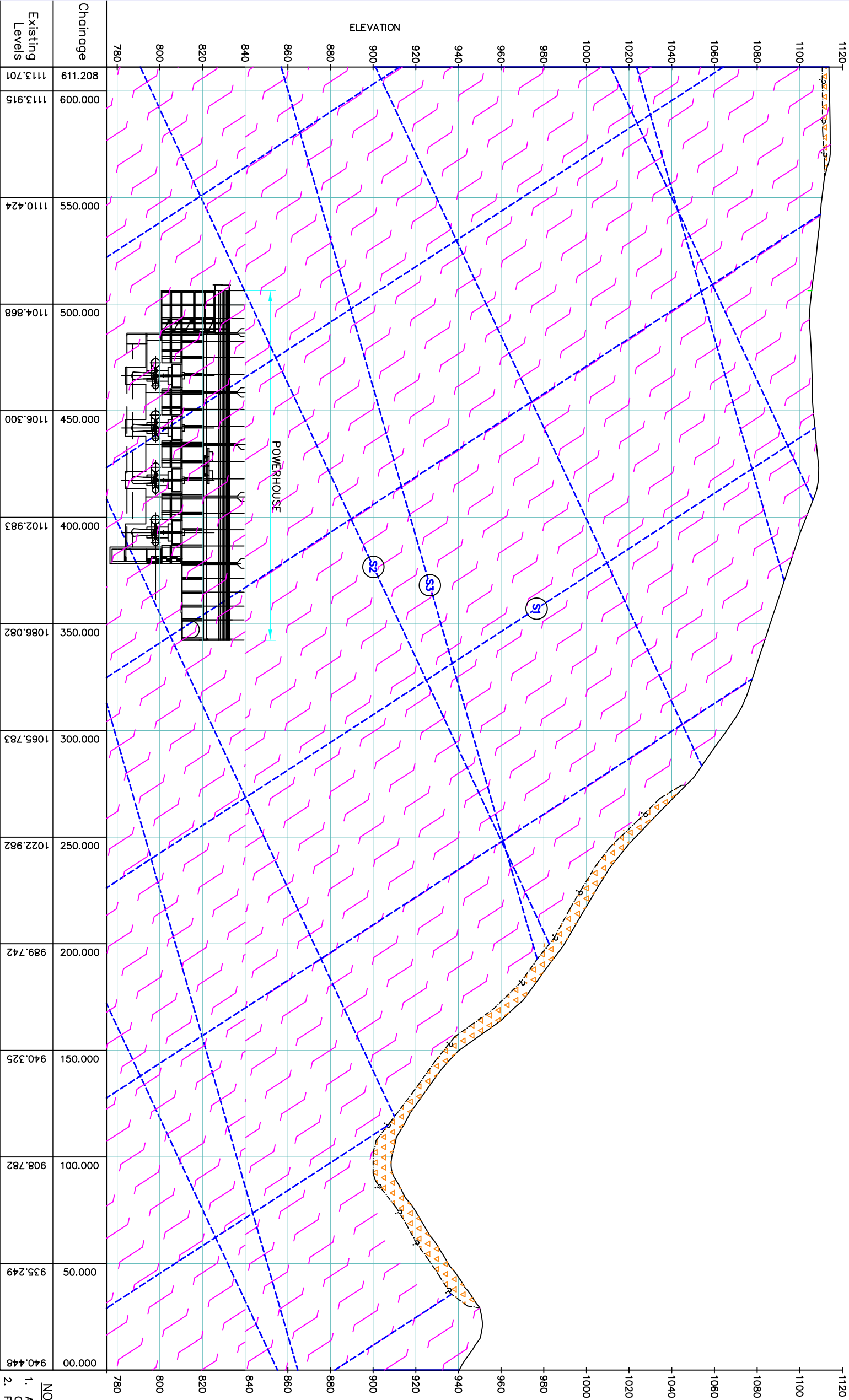
1. ALL DIMENSIONS AND LEVELS ARE IN METRES UNLESS OTHERWISE SPECIFIED.
2. FOR LOCATION OF SECTION LINE REFER PLATE NO.G-17



SCALE 1 : 2000



<div>SNC-LAVALIN Engineering India</div>												Client: TATO HYDRO POWER PRIVATE LIMITED			
<div><div>Project: TATO-II</div><div>Project Director: Antilabh Sharan</div><div>Designed: Antu, P.K</div><div>Drawn: Antu, P.K</div><div>Scale: 1:2000</div></div>												Project: HYDROELECTRIC PROJECT Arumachal Pradesh, India.			
<div><div>Project No. 167103</div><div>Drawing Code TT-02</div><div>AutoCAD No. 4ADD</div></div>												Title: GEOLOGICAL SECTION ALONG MAT & ADIT TO PRESSURE SHAFT BOTTOM (SECTION 3-3)			
<div><div>Project No. 167103</div><div>Drawing Code TT-02</div><div>AutoCAD No. 4ADD</div></div>												Title: GEOLOGICAL SECTION ALONG MAT & ADIT TO PRESSURE SHAFT BOTTOM (SECTION 3-3)			
<div><div>Project No. 167103</div><div>Drawing Code TT-02</div><div>AutoCAD No. 4ADD</div></div>												Title: GEOLOGICAL SECTION ALONG MAT & ADIT TO PRESSURE SHAFT BOTTOM (SECTION 3-3)			
<div><div>Project No. 167103</div><div>Drawing Code TT-02</div><div>AutoCAD No. 4ADD</div></div>												Title: GEOLOGICAL SECTION ALONG MAT & ADIT TO PRESSURE SHAFT BOTTOM (SECTION 3-3)			
<div><div>Project No. 167103</div><div>Drawing Code TT-02</div><div>AutoCAD No. 4ADD</div></div>												Title: GEOLOGICAL SECTION ALONG MAT & ADIT TO PRESSURE SHAFT BOTTOM (SECTION 3-3)			
<div><div>Project No. 167103</div><div>Drawing Code TT-02</div><div>AutoCAD No. 4ADD</div></div>												Title: GEOLOGICAL SECTION ALONG MAT & ADIT TO PRESSURE SHAFT BOTTOM (SECTION 3-3)			
<div><div>Project No. 167103</div><div>Drawing Code TT-02</div><div>AutoCAD No. 4ADD</div></div>												Title: GEOLOGICAL SECTION ALONG MAT & ADIT TO PRESSURE SHAFT BOTTOM (SECTION 3-3)			
<div><div>Project No. 167103</div><div>Drawing Code TT-02</div><div>AutoCAD No. 4ADD</div></div>												Title: GEOLOGICAL SECTION ALONG MAT & ADIT TO PRESSURE SHAFT BOTTOM (SECTION 3-3)			
<div><div>Project No. 167103</div><div>Drawing Code TT-02</div><div>AutoCAD No. 4ADD</div></div>												Title: GEOLOGICAL SECTION ALONG MAT & ADIT TO PRESSURE SHAFT BOTTOM (SECTION 3-3)			
<div><div>Project No. 167103</div><div>Drawing Code TT-02</div><div>AutoCAD No. 4ADD</div></div>												Title: GEOLOGICAL SECTION ALONG MAT & ADIT TO PRESSURE SHAFT BOTTOM (SECTION 3-3)			
<div><div>Project No. 167103</div><div>Drawing Code TT-02</div><div>AutoCAD No. 4ADD</div></div>												Title: GEOLOGICAL SECTION ALONG MAT & ADIT TO PRESSURE SHAFT BOTTOM (SECTION 3-3)			
<div><div>Project No. 167103</div><div>Drawing Code TT-02</div><div>AutoCAD No. 4ADD</div></div>												Title: GEOLOGICAL SECTION ALONG MAT & ADIT TO PRESSURE SHAFT BOTTOM (SECTION 3-3)			
<div><div>Project No. 167103</div><div>Drawing Code TT-02</div><div>AutoCAD No. 4ADD</div></div>												Title: GEOLOGICAL SECTION ALONG MAT & ADIT TO PRESSURE SHAFT BOTTOM (SECTION 3-3)			
<div><div>Project No. 167103</div><div>Drawing Code TT-02</div><div>AutoCAD No. 4ADD</div></div>												Title: GEOLOGICAL SECTION ALONG MAT & ADIT TO PRESSURE SHAFT BOTTOM (SECTION 3-3)			
<div><div>Project No. 167103</div><div>Drawing Code TT-02</div><div>AutoCAD No. 4ADD</div></div>												Title: GEOLOGICAL SECTION ALONG MAT & ADIT TO PRESSURE SHAFT BOTTOM (SECTION 3-3)			
<div><div>Project No. 167103</div><div>Drawing Code TT-02</div><div>AutoCAD No. 4ADD</div></div>												Title: GEOLOGICAL SECTION ALONG MAT & ADIT TO PRESSURE SHAFT BOTTOM (SECTION 3-3)			
<div><div>Project No. 167103</div><div>Drawing Code TT-02</div><div>AutoCAD No. 4ADD</div></div>												Title: GEOLOGICAL SECTION ALONG MAT & ADIT TO PRESSURE SHAFT BOTTOM (SECTION 3-3)			
<div><div>Project No. 167103</div><div>Drawing Code TT-02</div><div>AutoCAD No. 4ADD</div></div>												Title: GEOLOGICAL SECTION ALONG MAT & ADIT TO PRESSURE SHAFT BOTTOM (SECTION 3-3)			
<div><div>Project No. 167103</div><div>Drawing Code TT-02</div><div>AutoCAD No. 4ADD</div></div>												Title: GEOLOGICAL SECTION ALONG MAT & ADIT TO PRESSURE SHAFT BOTTOM (SECTION 3-3)			
<div><div>Project No. 167103</div><div>Drawing Code TT-02</div><div>AutoCAD No. 4ADD</div></div>												Title: GEOLOGICAL SECTION ALONG MAT & ADIT TO PRESSURE SHAFT BOTTOM (SECTION 3-3)			
<div><div>Project No. 167103</div><div>Drawing Code TT-02</div><div>AutoCAD No. 4ADD</div></div>												Title: GEOLOGICAL SECTION ALONG MAT & ADIT TO PRESSURE SHAFT BOTTOM (SECTION 3-3)			
<div><div>Project No. 167103</div><div>Drawing Code TT-02</div><div>AutoCAD No. 4ADD</div></div>												Title: GEOLOGICAL SECTION ALONG MAT & ADIT TO PRESSURE SHAFT BOTTOM (SECTION 3-3)			
<div><div>Project No. 167103</div><div>Drawing Code TT-02</div><div>AutoCAD No. 4ADD</div></div>												Title: GEOLOGICAL SECTION ALONG MAT & ADIT TO PRESSURE SHAFT BOTTOM (SECTION 3-3)			
<div><div>Project No. 167103</div><div>Drawing Code TT-02</div><div>AutoCAD No. 4ADD</div></div>												Title: GEOLOGICAL SECTION ALONG MAT & ADIT TO PRESSURE SHAFT BOTTOM (SECTION 3-3)			
<div><div>Project No. 167103</div><div>Drawing Code TT-02</div><div>AutoCAD No. 4ADD</div></div>												Title: GEOLOGICAL SECTION ALONG MAT & ADIT TO PRESSURE SHAFT BOTTOM (SECTION 3-3)			
<div><div>Project No. 167103</div><div>Drawing Code TT-02</div><div>AutoCAD No. 4ADD</div></div>												Title: GEOLOGICAL SECTION ALONG MAT & ADIT TO PRESSURE SHAFT BOTTOM (SECTION 3-3)			
<div><div>Project No. 167103</div><div>Drawing Code TT-02</div><div>AutoCAD No. 4ADD</div></div>												Title: GEOLOGICAL SECTION ALONG MAT & ADIT TO PRESSURE SHAFT BOTTOM (SECTION 3-3)			
<div><div>Project No. 167103</div><div>Drawing Code TT-02</div><div>AutoCAD No. 4ADD</div></div>												Title: GEOLOGICAL SECTION ALONG MAT & ADIT TO PRESSURE SHAFT BOTTOM (SECTION 3-3)			
<div><div>Project No. 167103</div><div>Drawing Code TT-02</div><div>AutoCAD No. 4ADD</div></div>												Title: GEOLOGICAL SECTION ALONG MAT & ADIT TO PRESSURE SHAFT BOTTOM (SECTION 3-3)			
<div><div>Project No. 167103</div><div>Drawing Code TT-02</div><div>AutoCAD No. 4ADD</div></div>												Title: GEOLOGICAL SECTION ALONG MAT & ADIT TO PRESSURE SHAFT BOTTOM (SECTION 3-3)			
<div><div>Project No. 167103</div><div>Drawing Code TT-02</div><div>AutoCAD No. 4ADD</div></div>												Title: GEOLOGICAL SECTION ALONG MAT & ADIT TO PRESSURE SHAFT BOTTOM (SECTION 3-3)			
<div><div>Project No. 167103</div><div>Drawing Code TT-02</div><div>AutoCAD No. 4ADD</div></div>												Title: GEOLOGICAL SECTION ALONG MAT & ADIT TO PRESSURE SHAFT BOTTOM (SECTION 3-3)			
<div><div>Project No. 167103</div><div>Drawing Code TT-02</div><div>AutoCAD No. 4ADD</div></div>												Title: GEOLOGICAL SECTION ALONG MAT & ADIT TO PRESSURE SHAFT BOTTOM (SECTION 3-3)			
<div><div>Project No. 167103</div><div>Drawing Code TT-02</div><div>AutoCAD No. 4ADD</div></div>												Title: GEOLOGICAL SECTION ALONG MAT & ADIT TO PRESSURE SHAFT BOTTOM (SECTION 3-3)			
<div><div>Project No. 167103</div><div>Drawing Code TT-02</div><div>AutoCAD No. 4ADD</div></div>												Title: GEOLOGICAL SECTION ALONG MAT & ADIT TO PRESSURE SHAFT BOTTOM (SECTION 3-3)			
<div><div>Project No. 167103</div><div>Drawing Code TT-02</div><div>AutoCAD No. 4ADD</div></div>												Title: GEOLOGICAL SECTION ALONG MAT & ADIT TO PRESSURE SHAFT BOTTOM (SECTION 3-3)			
<div><div>Project No. 167103</div><div>Drawing Code TT-02</div><div>AutoCAD No. 4ADD</div></div>												Title: GEOLOGICAL SECTION ALONG MAT & ADIT TO PRESSURE SHAFT BOTTOM (SECTION 3-3)			
<div><div>Project No. 167103</div><div>Drawing Code TT-02</div><div>AutoCAD No. 4ADD</div></div>												Title: GEOLOGICAL SECTION ALONG MAT & ADIT TO PRESSURE SHAFT BOTTOM (SECTION 3-3)			
<div><div>Project No. 167103</div><div>Drawing Code TT-02</div><div>AutoCAD No. 4ADD</div></div>												Title: GEOLOGICAL SECTION ALONG MAT & ADIT TO PRESSURE SHAFT BOTTOM (SECTION 3-3)			
<div><div>Project No. 167103</div><div>Drawing Code TT-02</div><div>AutoCAD No. 4ADD</div></div>												Title: GEOLOGICAL SECTION ALONG MAT & ADIT TO PRESSURE SHAFT BOTTOM (SECTION 3-3)			
<div><div>Project No. 167103</div><div>Drawing Code TT-02</div><div>AutoCAD No. 4ADD</div></div>												Title: GEOLOGICAL SECTION ALONG MAT & ADIT TO PRESSURE SHAFT BOTTOM (SECTION 3-3)			
<div><div>Project No. 167103</div><div>Drawing Code TT-02</div><div>AutoCAD No. 4ADD</div></div>												Title: GEOLOGICAL SECTION ALONG MAT & ADIT TO PRESSURE SHAFT BOTTOM (SECTION 3-3)			
<div><div>Project No. 167103</div><div>Drawing Code TT-02</div><div>AutoCAD No. 4ADD</div></div>												Title: GEOLOGICAL SECTION ALONG MAT & ADIT TO PRESSURE SHAFT BOTTOM (SECTION 3-3)			
<div><div>Project No. 167103</div><div>Drawing Code TT-02</div><div>AutoCAD No. 4ADD</div></div>												Title: GEOLOGICAL SECTION ALONG MAT & ADIT TO PRESSURE SHAFT BOTTOM (SECTION 3-3)			
<div><div>Project No. 167103</div><div>Drawing Code TT-02</div><div>AutoCAD No. 4ADD</div></div>												Title: GEOLOGICAL SECTION ALONG MAT & ADIT TO PRESSURE SHAFT BOTTOM (SECTION 3-3)			
<div><div>Project No. 167103</div><div>Drawing Code TT-02</div><div>AutoCAD No. 4ADD</div></div>												Title: GEOLOGICAL SECTION ALONG MAT & ADIT TO PRESSURE SHAFT BOTTOM (SECTION 3-3)			
<div><div>Project No. 167103</div><div>Drawing Code TT-02</div><div>AutoCAD No. 4ADD</div></div>												Title: GEOLOGICAL SECTION ALONG MAT & ADIT TO PRESSURE SHAFT BOTTOM (SECTION 3-3)			
<div><div>Project No. 167103</div><div>Drawing Code TT-02</div><div>AutoCAD No. 4ADD</div></div>												Title: GEOLOGICAL SECTION ALONG MAT & ADIT TO PRESSURE SHAFT BOTTOM (SECTION 3-3)			
<div><div>Project No. 167103</div><div>Drawing Code TT-02</div><div>AutoCAD No. 4ADD</div></div>												Title: GEOLOGICAL SECTION ALONG MAT & ADIT TO PRESSURE SHAFT BOTTOM (SECTION 3-3)			
<div><div>Project No. 167103</div><div>Drawing Code TT-02</div><div>AutoCAD No. 4ADD</div></div>												Title: GEOLOGICAL SECTION ALONG MAT & ADIT TO PRESSURE SHAFT BOTTOM (SECTION 3-3)			
<div><div>Project No. 167103</div><div>Drawing Code TT-02</div><div>AutoCAD No. 4ADD</div></div>												Title: GEOLOGICAL SECTION ALONG MAT & ADIT TO PRESSURE SHAFT BOTTOM (SECTION 3-3)			
<div><div>Project No. 167103</div><div>Drawing Code TT-02</div><div>AutoCAD No. 4ADD</div></div>												Title: GEOLOGICAL SECTION ALONG MAT & ADIT TO PRESSURE SHAFT BOTTOM (SECTION 3-3)			
<div><div>Project No. 167103</div><div>Drawing Code TT-02</div><div>AutoCAD No. 4ADD</div></div>												Title: GEOLOGICAL SECTION ALONG MAT & ADIT TO PRESSURE SHAFT BOTTOM (SECTION 3-3)			
<div><div>Project No. 167103</div><div>Drawing Code TT-02</div><div>AutoCAD No. 4ADD</div></div>												Title: GEOLOGICAL SECTION ALONG MAT & ADIT TO PRESSURE SHAFT BOTTOM (SECTION 3-3)			
<div><div>Project No. 167103</div><div>Drawing Code TT-02</div><div>AutoCAD No. 4ADD</div></div>												Title: GEOLOGICAL SECTION ALONG MAT & ADIT TO PRESSURE SHAFT BOTTOM (SECTION 3-3)			
<div><div>Project No. 167103</div><div>Drawing Code TT-02</div><div>AutoCAD No. 4ADD</div></div>												Title: GEOLOGICAL SECTION ALONG MAT & ADIT TO PRESSURE SHAFT BOTTOM (SECTION 3-3)			
<div><div>Project No. 167103</div><div>Drawing Code TT-02</div><div>AutoCAD No. 4ADD</div></div>												Title: GEOLOGICAL SECTION ALONG MAT & ADIT TO PRESSURE SHAFT BOTTOM (SECTION 3-3)			
<div><div>Project No. 167103</div><div>Drawing Code TT-02</div><div>AutoCAD No. 4ADD</div></div>												Title: GEOLOGICAL SECTION ALONG MAT & ADIT TO PRESSURE SHAFT BOTTOM (SECTION 3-3)			
<div><div>Project No. 167103</div><div>Drawing Code TT-02</div><div>AutoCAD No. 4ADD</div></div>												Title: GEOLOGICAL SECTION ALONG MAT & ADIT TO PRESSURE SHAFT BOTTOM (SECTION 3-3)			
<div><div>Project No. 167103</div><div>Drawing Code TT-02</div><div>AutoCAD No. 4ADD</div></div>												Title: GEOLOGICAL SECTION ALONG MAT & ADIT TO PRESSURE SHAFT BOTTOM (SECTION 3-3)			
<div><div>Project No. 167103</div><div>Drawing Code TT-02</div><div>AutoCAD No. 4ADD</div></div>												Title: GEOLOGICAL SECTION ALONG MAT & ADIT TO PRESSURE SHAFT BOTTOM (SECTION 3-3)			
<div><div>Project No. 167103</div><div>Drawing Code TT-02</div><div>AutoCAD No. 4ADD</div></div>												Title: GEOLOGICAL SECTION ALONG MAT & ADIT TO PRESSURE SHAFT BOTTOM (SECTION 3-3)			
<div><div>Project No. 167103</div><div>Drawing Code TT-02</div><div>AutoCAD No. 4ADD</div></div>												Title: GEOLOGICAL SECTION ALONG MAT & ADIT TO PRESSURE SHAFT BOTTOM (SECTION 3-3)			
<div><div>Project No. 167103</div><div>Drawing Code TT-02</div><div>AutoCAD No. 4ADD</div></div>												Title: GEOLOGICAL SECTION ALONG MAT & ADIT TO PRESSURE SHAFT BOTTOM (SECTION 3-3)			
<div><div>Project No. 167103</div><div>Drawing Code TT-02</div><div>AutoCAD No. 4ADD</div></div>												Title: GEOLOGICAL SECTION ALONG MAT & ADIT TO PRESSURE SHAFT BOTTOM (SECTION 3-3)			
<div><div>Project No. 167103</div><div>Drawing Code TT-02</div><div>AutoCAD No. 4ADD</div></div>												Title: GEOLOGICAL SECTION ALONG MAT & ADIT TO PRESSURE SHAFT BOTTOM (SECTION 3-3)			
<div><div>Project No. 167103</div><div>Drawing Code TT-02</div><div>AutoCAD No. 4ADD</div></div>												Title: GEOLOGICAL SECTION ALONG MAT & ADIT TO PRESSURE SHAFT BOTTOM (SECTION 3-3)			
<div><div>Project No. 167103</div><div>Drawing Code TT-02</div><div>AutoCAD No. 4ADD</div></div>												Title: GEOLOGICAL SECTION ALONG MAT & ADIT TO PRESSURE SHAFT BOTTOM (SECTION 3-3)			
<div><div>Project No. 167103</div><div>Drawing Code TT-02</div><div>AutoCAD No. 4ADD</div></div>												Title: GEOLOGICAL SECTION ALONG MAT & ADIT TO PRESSURE SHAFT BOTTOM (SECTION 3-3)			
<div><div>Project No. 167103</div><div>Drawing Code TT-02</div><div>AutoCAD No. 4ADD</div></div>												Title: GEOLOGICAL SECTION ALONG MAT & ADIT TO PRESSURE SHAFT BOTTOM (SECTION 3-3)			
<div><div>Project No. 167103</div><div>Drawing Code TT-02</div><div>AutoCAD No. 4ADD</div></div>												Title: GEOLOGICAL SECTION ALONG MAT & ADIT TO PRESSURE SHAFT BOTTOM (SECTION 3-3)			
<div><div>Project No. 167103</div><div>Drawing Code TT-02</div><div>AutoCAD No. 4ADD</div></div>												Title: GEOLOGICAL SECTION ALONG MAT & ADIT TO PRESSURE SHAFT BOTTOM (SECTION 3-3)			
<div><div>Project No. 167103</div><div>Drawing Code TT-02</div><div>AutoCAD No. 4ADD</div></div>												Title: GEOLOGICAL SECTION ALONG MAT & ADIT TO PRESSURE SHAFT BOTTOM (SECTION 3-3)			
<div><div>Project No. 167103</div><div>Drawing Code TT-02</div><div>AutoCAD No. 4ADD</div></div>												Title: GEOLOGICAL SECTION ALONG MAT & ADIT TO PRESSURE SHAFT BOTTOM (SECTION 3-3)			
<div><div>Project No. 167103</div><div>Drawing Code TT-02</div><div>AutoCAD No. 4ADD</div></div>												Title: GEOLOGICAL SECTION ALONG MAT & ADIT TO PRESSURE SHAFT BOTTOM (SECTION 3-3)			
<div><div>Project No. 167103</div><div>Drawing Code TT-02</div><div>AutoCAD No. 4ADD</div></div>												Title: GEOLOGICAL SECTION ALONG MAT & ADIT TO PRESSURE SHAFT BOTTOM (SECTION 3-3)			
<div><div>Project No. 167103</div><div>Drawing Code TT-02</div><div>AutoCAD No. 4ADD</div></div>												Title: GEOLOGICAL SECTION ALONG MAT & ADIT TO PRESSURE SHAFT BOTTOM (SECTION 3-3)			
<div><div>Project No. 167103</div><div>Drawing Code TT-02</div><div>AutoCAD No. 4ADD</div></div>												Title: GEOLOGICAL SECTION ALONG MAT & ADIT TO PRESSURE SHAFT BOTTOM (SECTION 3-3)			
<div><div>Project No. 167103</div><div>Drawing Code TT-02</div><div>AutoCAD No. 4ADD</div></div>												Title: GEOLOGICAL SECTION ALONG MAT & ADIT TO PRESSURE SHAFT BOTTOM (SECTION 3-3)			
<div><div>Project No. 167103</div><div>Drawing Code TT-02</div><div>AutoCAD No. 4ADD</div></div>												Title: GEOLOGICAL SECTION ALONG MAT & ADIT TO PRESSURE SHAFT BOTTOM (SECTION 3-3)			
<div><div>Project No. 167103</div><div>Drawing Code TT-02</div><div>AutoCAD No. 4ADD</div></div>												Title: GEOLOGICAL SECTION ALONG MAT & ADIT TO PRESSURE SHAFT BOTTOM (SECTION 3-3)			
<div><div>Project No. 167103</div><div>Drawing Code TT-02</div><div>AutoCAD No. 4ADD</div></div>												Title: GEOLOGICAL SECTION ALONG MAT & ADIT TO PRESSURE SHAFT BOTTOM (SECTION 3-3)			
<div><div>Project No. 167103</div><div>Drawing Code TT-02</div><div>AutoCAD No. 4ADD</div></div>												Title: GEOLOGICAL SECTION ALONG MAT & ADIT TO PRESSURE SHAFT BOTTOM (SECTION 3-3)			
<div><div>Project No. 167103</div><div>Drawing Code TT-02</div><div>AutoCAD No. 4ADD</div></div>												Title: GEOLOGICAL SECTION ALONG MAT & ADIT TO PRESSURE SHAFT BOTTOM (SECTION 3-3)			
<div><div>Project No. 167103</div><div>Drawing Code TT-02</div><div>AutoCAD No. 4ADD</div></div>												Title: GEOLOGICAL SECTION ALONG MAT & ADIT TO PRESSURE SHAFT BOTTOM (SECTION 3-3)			
<div><div>Project No. 167103</div><div>Drawing Code TT-02</div><div>AutoCAD No. 4ADD</div></div>												Title: GEOLOGICAL SECTION ALONG MAT & ADIT TO PRESSURE SHAFT BOTTOM (SECTION 3-3)			
<div><div>Project No. 167103</div><div>Drawing Code TT-02</div><div>AutoCAD No. 4ADD</div></div>												Title: GEOLOGICAL SECTION ALONG MAT & ADIT TO PRESSURE SHAFT BOTTOM (SECTION 3-3)			
<div><div>Project No. 167103</div><div>Drawing Code TT-02</div><div>AutoCAD No. 4ADD</div></div>												Title: GEOLOGICAL SECTION ALONG MAT & ADIT TO PRESSURE SHAFT BOTTOM (SECTION 3-3)			
<div><div>Project No. 167103</div><div>Drawing Code TT-02</div><div>AutoCAD No. 4ADD</div></div>												Title: GEOLOGICAL SECTION ALONG MAT & ADIT TO PRESSURE SHAFT BOTTOM (SECTION 3-3)			
<div><div>Project No. 167103</div><div>Drawing Code TT-02</div><div>AutoCAD No. 4ADD</div></div>												Title: GEOLOGICAL SECTION ALONG MAT & ADIT TO PRESSURE SHAFT BOTTOM (SECTION 3-3)			
<div><div>Project No. 167103</div><div>Drawing Code TT-02</div><div>AutoCAD No. 4ADD</div></div>												Title: GEOLOGICAL SECTION ALONG MAT & ADIT TO PRESSURE SHAFT BOTTOM (SECTION 3-3)			
<div><div>Project No. 167103</div><div>Drawing Code TT-02</div><div>AutoCAD No. 4ADD</div></div>												Title: GEOLOGICAL SECTION ALONG MAT & ADIT TO PRESSURE SHAFT BOTTOM (SECTION 3-3)			
<div><div>Project No. 167103</div><div>Drawing Code TT-02</div><div>AutoCAD No. 4ADD</div></div>												Title: GEOLOGICAL SECTION ALONG MAT & ADIT TO PRESSURE SHAFT BOTTOM (SECTION 3-3)			
<div><div>Project No. 167103</div><div>Drawing Code TT-02</div><div>AutoCAD No. 4ADD</div></div>												Title: GEOLOGICAL SECTION ALONG MAT & ADIT TO PRESSURE SHAFT BOTTOM (SECTION 3-3)			
<div><div>Project No. 167103</div><div>Drawing Code TT-02</div><div>AutoCAD No. 4ADD</div></div>												Title: GEOLOGICAL SECTION ALONG MAT & ADIT TO PRESSURE SHAFT BOTTOM (SECTION 3-3)			
<div><div>Project No. 167103</div><div>Drawing Code TT-02</div><div>AutoCAD No. 4ADD</div></div>												Title: GEOLOGICAL SECTION ALONG MAT & ADIT TO PRESSURE SHAFT BOTTOM (SECTION 3-3)			
<div><div>Project No. 167103</div><div>Drawing Code TT-02</div><div>AutoCAD No. 4ADD</div></div>												Title: GEOLOGICAL SECTION ALONG MAT & ADIT TO PRESSURE SHAFT BOTTOM (SECTION 3-3)			
<div><div>Project No. 167103</div><div>Drawing Code TT-02</div><div>AutoCAD No. 4ADD</div></div>												Title: GEOLOGICAL SECTION ALONG MAT & ADIT TO PRESSURE SHAFT BOTTOM (SECTION 3-3)			
<div><div>Project No. 167103</div><div>Drawing Code TT-02</div><div>AutoCAD No. 4ADD</div></div>												Title: GEOLOGICAL SECTION ALONG MAT & ADIT TO PRESSURE SHAFT BOTTOM (SECTION 3-3)			
<div><div>Project No. 167103</div><div>Drawing Code TT-02</div><div>AutoCAD No. 4ADD</div></div>												Title: GEOLOGICAL SECTION ALONG MAT & ADIT TO PRESSURE SHAFT BOTTOM (SECTION 3-3)			
<div><div>Project No. 167103</div><div>Drawing Code TT-02</div><div>AutoCAD No. 4ADD</div></div>												Title: GEOLOGICAL SECTION ALONG MAT & ADIT TO PRESSURE SHAFT BOTTOM (SECTION 3-3)			
<div><div>Project No. 167103</div><div>Drawing Code TT-02</div><div>AutoCAD No. 4ADD</div></div>												Title: GEOLOGICAL SECTION ALONG MAT & ADIT TO PRESSURE SHAFT BOTTOM (SECTION 3-3)			
<div><div>Project No. 167103</div><div>Drawing Code TT-02</div><div>AutoCAD No. 4ADD</div></div>												Title: GEOLOGICAL SECTION ALONG MAT & ADIT TO PRESSURE SHAFT BOTTOM (SECTION 3-3)			
<div><div>Project No. 167103</div><div>Drawing Code TT-02</div><div>AutoCAD No. 4ADD</div></div>												Title: GEOLOGICAL SECTION ALONG MAT & ADIT TO PRESSURE SHAFT BOTTOM (SECTION 3-3)			
<div><div>Project No. 167103</div><div>Drawing Code TT-02</div><div>AutoCAD No. 4ADD</div></div>												Title: GEOLOGICAL SECTION ALONG MAT & ADIT TO PRESSURE SHAFT BOTTOM (SECTION 3-3)			
<div><div>Project No. 167103</div><div>Drawing Code TT-02</div><div>AutoCAD No. 4ADD</div></div>												Title: GEOLOGICAL SECTION ALONG MAT & ADIT TO PRESSURE SHAFT BOTTOM (SECTION 3-3)			
<div><div>Project No. 167103</div><div>Drawing Code TT-02</div><div>AutoCAD No. 4ADD</div></div>												Title: GEOLOGICAL SECTION ALONG MAT & ADIT TO PRESSURE SHAFT BOTTOM (SECTION 3-3)			
<div><div>Project No. 167103</div><div>Drawing Code TT-02</div><div>AutoCAD No. 4ADD</div></div>												Title: GEOLOGICAL SECTION ALONG MAT & ADIT TO PRESSURE SHAFT BOTTOM (SECTION 3-3)			
<div><div>Project No. 167103</div><div>Drawing Code TT-02</div><div>AutoCAD No. 4ADD</div></div>												Title: GEOLOGICAL SECTION ALONG MAT & ADIT TO PRESSURE SHAFT BOTTOM (SECTION 3-3)			
<div><div>Project No. 167103</div><div>Drawing Code TT-02</div><div>AutoCAD No. 4ADD</div></div>												Title: GEOLOGICAL SECTION ALONG MAT & ADIT TO PRESSURE SHAFT BOTTOM (SECTION 3-3)			
<div><div>Project No. 167103</div><div>Drawing Code TT-02</div><div>AutoCAD No. 4ADD</div></div>												Title: GEOLOGICAL SECTION ALONG MAT & ADIT TO PRESSURE SHAFT BOTTOM (SECTION 3-3)			
<div><div>Project No. 167103</div><div>Drawing Code TT-02</div><div>AutoCAD No. 4ADD</div></div>												Title: GEOLOGICAL SECTION ALONG MAT & ADIT TO PRESSURE SHAFT BOTTOM (SECTION 3-3)			
<div><div>Project No. 167103</div><div>Drawing Code TT-02</div><div>AutoCAD No. 4ADD</div></div>												Title: GEOLOGICAL SECTION ALONG MAT & ADIT TO PRESSURE SHAFT BOTTOM (SECTION 3-3)			
<div><div>Project No. 167103</div><div>Drawing Code TT-02</div><div>AutoCAD No. 4ADD</div></div>												Title: GEOLOGICAL SECTION ALONG MAT & ADIT TO PRESSURE SHAFT BOTTOM (SECTION 3-3)			
<div><div>Project No. 167103</div><div>Drawing Code TT-02</div><div>AutoCAD No. 4ADD</div></div>												Title: GEO			



JOINTS DETAILS			
JOINT SETS	STRIKE	DIP DIRECTION	DIP AMOUNT
S1 (F)	012° - 192°	282°	58°
S2	036° - 216°	126°	30°
S3	086° - 266°	176°	76°

Geological Index:

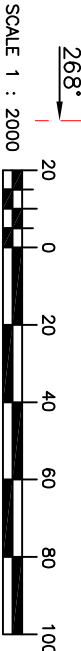
SLOPEWASH

GNEISS

LITHO BOUNDARY

TRACES OF JOINTS

- NOTES:
1. ALL DIMENSIONS AND LEVELS ARE IN METRES UNLESS OTHERWISE SPECIFIED.
 2. FOR LOCATION OF SECTION LINE REFER PLATE NO.G-17



Issue

Revision

Date

Distribution & Status

ISSUE REGISTER

Revision

Date

Description

By

Verified

Approved

REVISIONS

Title

Drawing No.

REFERENCE DRAWINGS

Project No.

Drawing Code

167103 TT-02 4ADD

Serial

Rev.

1021 00

SNC-Lavalin Engineering India

V.Batto

18.08.2010

Project Director

18.08.2010

Amrith Sharan

Y. P. Sharda

Designed

Verified

Antu.P.K

Antu.P.K

Drawn

Verified

1:2000

167103-TT-02-4ADD-1021-00

Scale

AutoCAD No.

Client:

TATO HYDRO POWER PRIVATE LIMITED

Project:

TATO-II HYDROELECTRIC PROJECT Arunachal Pradesh, India.

Title:

GEOLOGICAL SECTION ALONG AXIS OF POWERHOUSE (SECTION 4-4)

THIS DRAWING IS MEANT FOR DPR NOT TO BE USED FOR CONSTRUCTION.

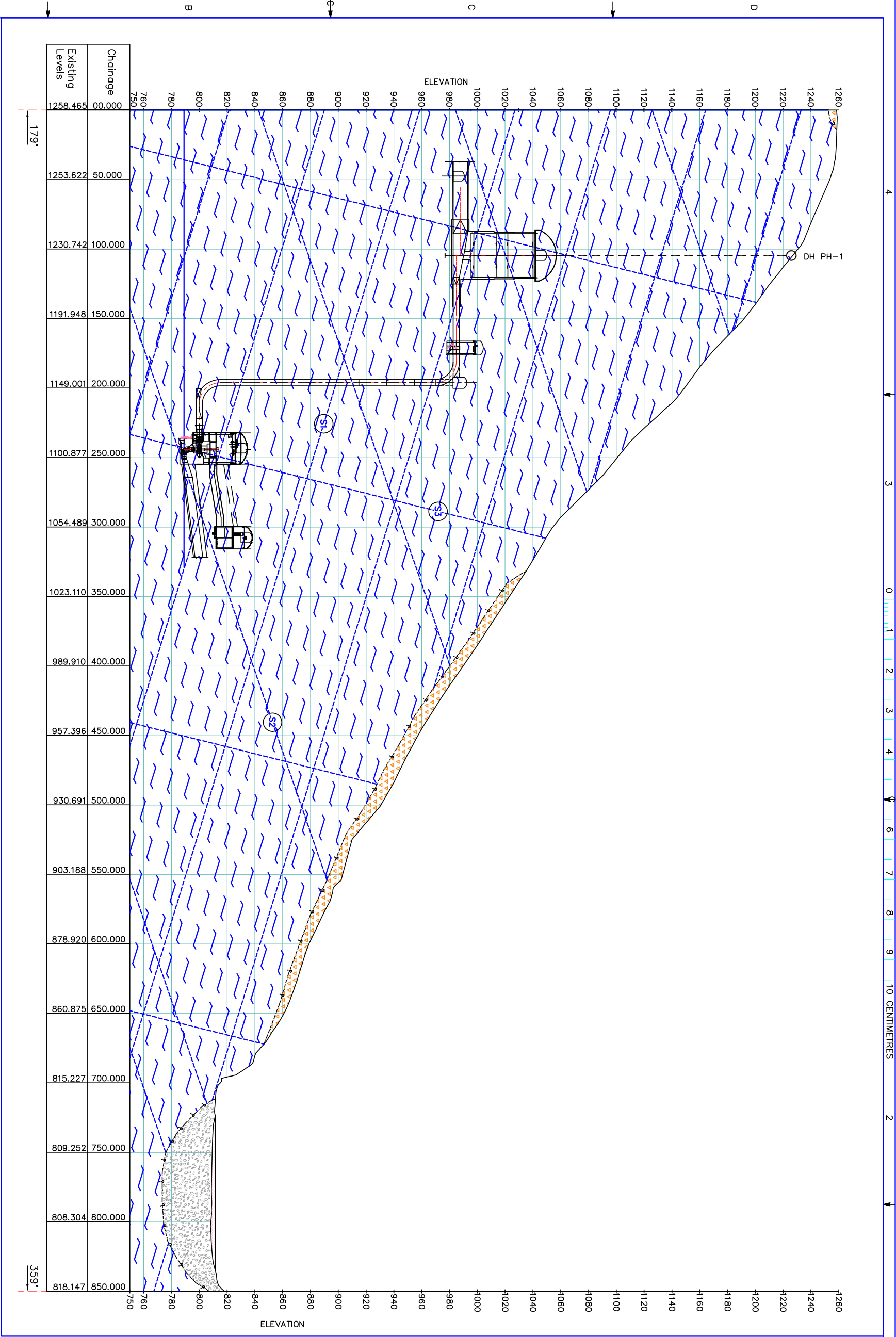
1

2

3

4

LAST SAVE: 2011/07/11 - 2:42pm
PATH: P:\Official Data\2008\TATO H.E.P\2011\Latest GEOLOGY AS ON JULY-2011\FINAL DPR -JULY-2011\G-16,G-18 TO G-21 & G-24,G-25.dwg



JOINTS DETAILS			
JOINT SETS	STRIKE	DIP DIRECTION	DIP AMOUNT
S1 (F)	012°-192°	282°	58°
S2	036°-216°	126°	30°
S3	086°-266°	176°	76°

GEOLOGICAL INDEX:

RIVER BORNE MATERIAL.

SLOPEWASH

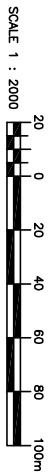
GNEISS


LITHO BOUNDARY

TRACES OF JOINTS

DRILL HOLE (IN PROGRESS)





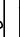
- NOTES:
1. ALL DIMENSIONS AND LEVELS ARE IN METRES UNLESS OTHERWISE SPECIFIED.
 2. FOR LOCATION OF SECTION LINE REFER PLATE NO.G-17



<div><div><div>SNC-LAVALIN</div><div>Engineering India</div></div></div>										Client: TATO HYDRO POWER PRIVATE LIMITED			
Project: TATO-II HYDROELECTRIC PROJECT Arunachal Pradesh, India.													
V.Betta		Date		18.08.2010		Project: TATO-II HYDROELECTRIC PROJECT Arunachal Pradesh, India.							
Project Director		Date		Y. P. Sharda		Title: GEOLOGICAL SECTION ALONG SURGE SHAFT & ACROSS THE P/H, TC & COLLECTION GALLERY (SECTION 5-5)							
Amitabh Sharan		Verified		Verified		Drawn							
Designed		Verified		Verified		Scale							
Artu, P.K		Verified		Verified		AutoCAD No.							
1:2000		167103-TT-02-400-1022-00		167103-TT-02-400-1022-00		Project No.							
Scale		AutoCAD No.		AutoCAD No.		Drawing No.							
167103		TT-02		4JDD		1022		00					
Project No.		Drawing Code.		Serial.		Rev.		Rev.					



JOINT SETS	STRIKE	DIP DIRECTION	DIP AMOUNT
S1 (F)	012-192°	282°	58°
S2	036-216°	126°	30°
S3	086-266°	176°	76°

	RIVER BORNE MATERIAL.
	SLOPEWASH
	GNEISS
	LITHO BOUNDARY
	TRACES OF JOINTS

NOTES.

1. ALL DIMENSIONS AND LEVELS ARE IN METRES UNLESS OTHERWISE SPECIFIED.
2. FOR LOCATION OF SECTION LINE REFER PLATE NO.G-17

[illegible]